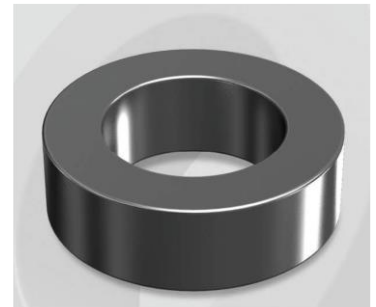


# CK112026G

## Electrical Characteristics

Material	Permeability ( $\mu$ )	AL $\pm$ 8% (nH/N <sup>2</sup> )	DCB (% min) @ 200 Oe	Coreloss (mW/cm <sup>2</sup> , max) @50kHz, 1000G
Mega Flux	26	11	64.4	770

OD : 112



## Core Dimensions

Dimensions		Uncoated		Coated		Color	Packaging
		(mm)	(inch)	(mm)	(inch)		
OD	(Max)	11.18	0.440	11.90	0.469	Black	Box Qty = 6,000 pcs
ID	(min)	6.35	0.250	5.89	0.232		
HT	(max)	3.96	0.156	4.72	0.186		

## Physical Characteristics

Cross Section (A)	Path Length ( $l$ )	Window Area (W <sub>a</sub> )	Volume (V)	Breakdown Voltage (Vac)
0.0906 cm <sup>2</sup>	2.69 cm	0.273 cm <sup>2</sup>	0.2437 cm <sup>3</sup>	1,000
0.01404 in <sup>2</sup>	1.059 in	53,878 cmil	0.0149 in <sup>3</sup>	

## Winding Information

0% Winding length/turn (cm)		
1.545		
40% winding factor Surface Area (cm <sup>2</sup> )		
6.05		
40% Wound Di.(mm)		
OD	ID	HT
13.34	3.86	6.46

## Typical DC Bias Performance

